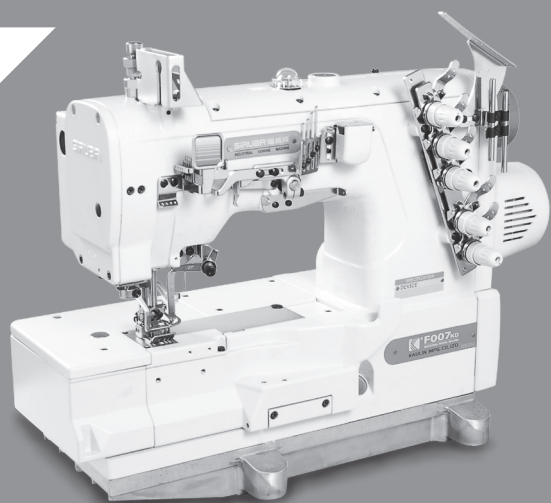


SIRUBA[®] Sew Reach

使用說明書與零件圖

INSTRUCTION BOOK & PARTS LIST

■ F007KD/FFT



CE

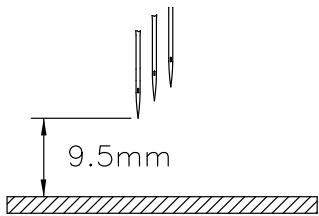
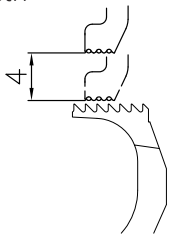
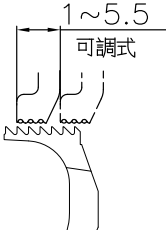
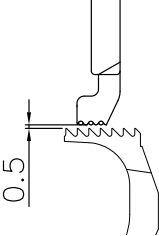
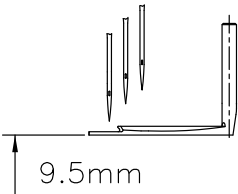
產品規格

PRODUCT SPECIFICATION

1. 規格

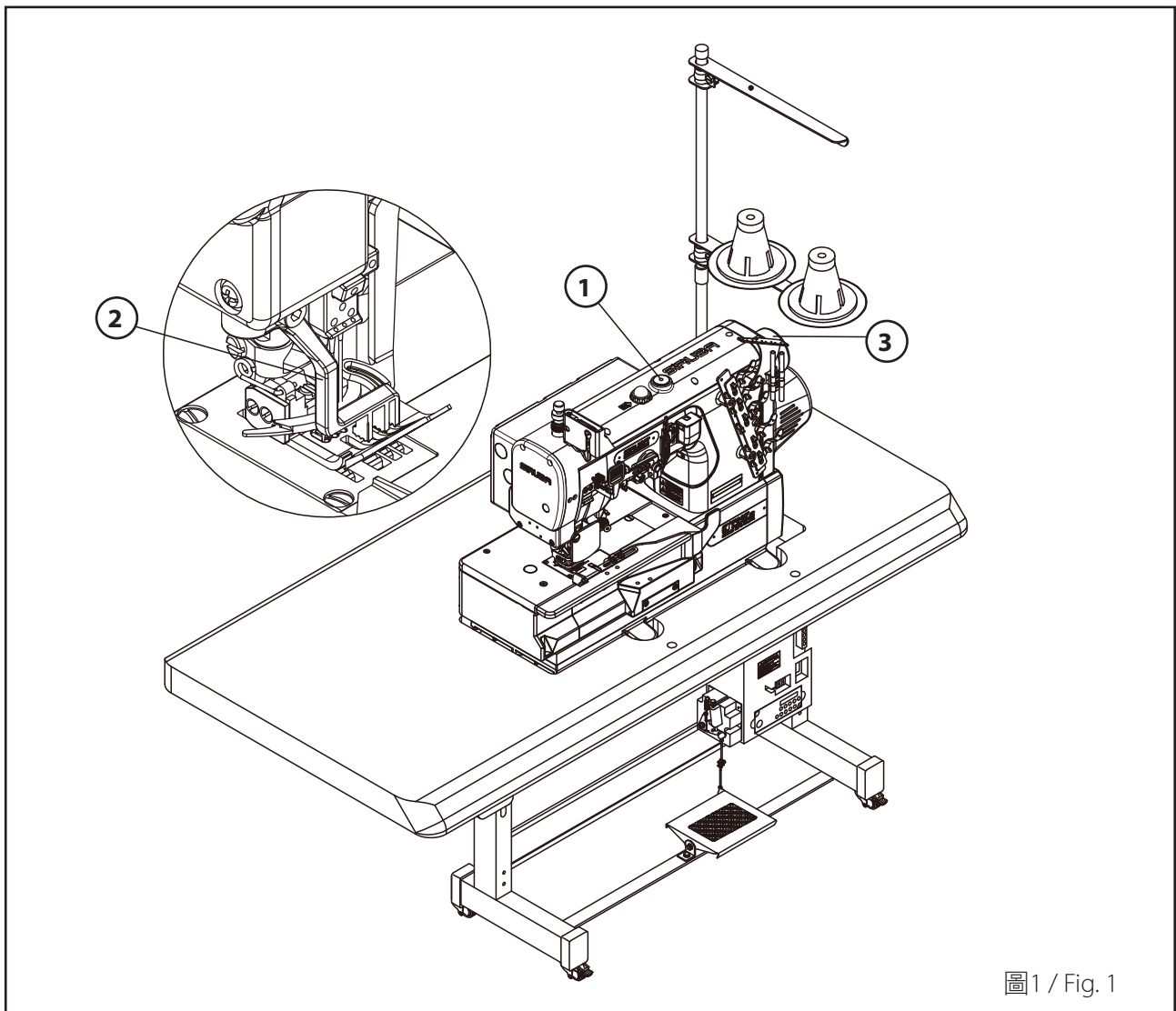
1. Specification

規格 Specifications	標準值 Standard value
針棒行程 Needle bar stroke	33±0.5 mm
左針高度 Left needle height	9.5 mm
送具高度 Feed dog height	0.8~1.2 mm
押具揚程 Presser foot lift	5 mm
使用針 Needle	UYX128GAS#10
上送齒上下行程 Top and bottom stroke for top feed teeth	4 mm
上送齒前後行程 Front and back stroke for top feed teeth	1~5.5 mm 可調式 adjustable
啟動扭力 Start up torque	4.5 kg-cm 以下 Below 4.5 kg-cm
最高轉速 Maximum speed	4500 s.p.m
噪音值 Noise level	80dB(A) 以下 Below 80dB(A)
上送齒與下送具最小距離 The minimum distance between top feed teeth and bottom feed dog	0.5 mm
上叉高度 Spreader height	9.5mm

<p>左針高度 Left needle height</p> 	<p>上送齒上下行程 Top and bottom stroke for top feed teeth</p> 	<p>上送齒前後行程 front and back stroke for top feed teeth</p> 
<p>上送齒與下送具最小距離 The minimum distance between top feed teeth and bottom feed dog</p> 	<p>上叉高度 Spreader height</p> 	

各部件名稱

PART NAMES



- ① 上送行程調整鈕
- ② 上送具
- ③ 刻度調整手輪

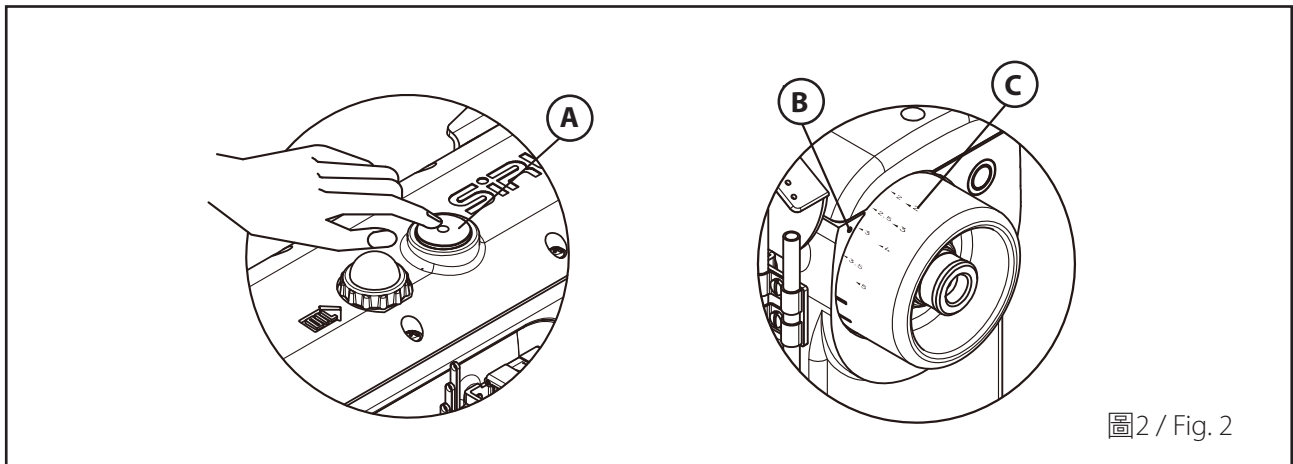
- ① Top feed stroke adjust button
- ② Top feed dog
- ③ scale adjustment hand wheel

調整

ADJUSTMENT

1. 上送齒行程大小之調整 (圖2)
行程大小由1.5~5.5mm無階段性調整
- (1.) 用左手壓下按鈕 ①，再以右手轉動手輪直到左手手指感覺按鈕嵌入到機器內部卡槽。
- (2.) 持續轉動手輪選擇所需之行程大小對準 ②，然後放開按鈕。
- (3.) 配合下送齒縫距，依手輪上紅色刻度 ③ 調整上送齒所需行程即可。

1. Adjust the top feed stroke (Fig. 2)
Adjust the stroke from 1.5 to 5.5mm without periodic adjustment
- (1.) Press button ① with left hand, and turn the hand wheel with right hand until the left hand finger feel the button enters the machine slot.
- (2.) Keep turning the hand wheel until ② pointed at the required stroke level, and release the button.
- (3.) Adjust the required top feed stroke according to red mark ③ on the hand wheel in coordination with bottom feed teeth distance.



2. 壓具壓力強度之調整

在布料推送順暢且縫合完美的情況下，盡量使壓具壓力輕一點。

* 鬆開螺帽 ②，將螺桿 ① 順時針旋轉壓力變大，反之則變小。(圖3)

3. 上送齒壓力強度之調整

在布料推送順暢且縫合完美的情況下，上送齒應盡量穩固，故壓力須稍大。

* 鬆開螺帽 ④，將螺桿 ③ 順時針旋轉壓力變大，反之則變小。(圖3)

2. Adjust the presser foot strength

Lighten the presser foot as much as possible when the fabric can be fed smoothly and stitched perfectly.

* Loose the screw nut ②. When the screw rod ① is rotated clockwise, the pressure is bigger, and when rotated counterclockwise, the pressure is smaller. (fig. 3)

3. Adjust the top feed teeth strength

The top feed teeth should be as stable as possible when the fabric is fed smoothly and stitched perfectly.

Thus adjust the pressure level as big as possible.

* Loose the screw nut ④. When the screw rod ③ is rotated clockwise, the pressure is bigger, and when rotated counterclockwise, the pressure is smaller. (fig. 3)

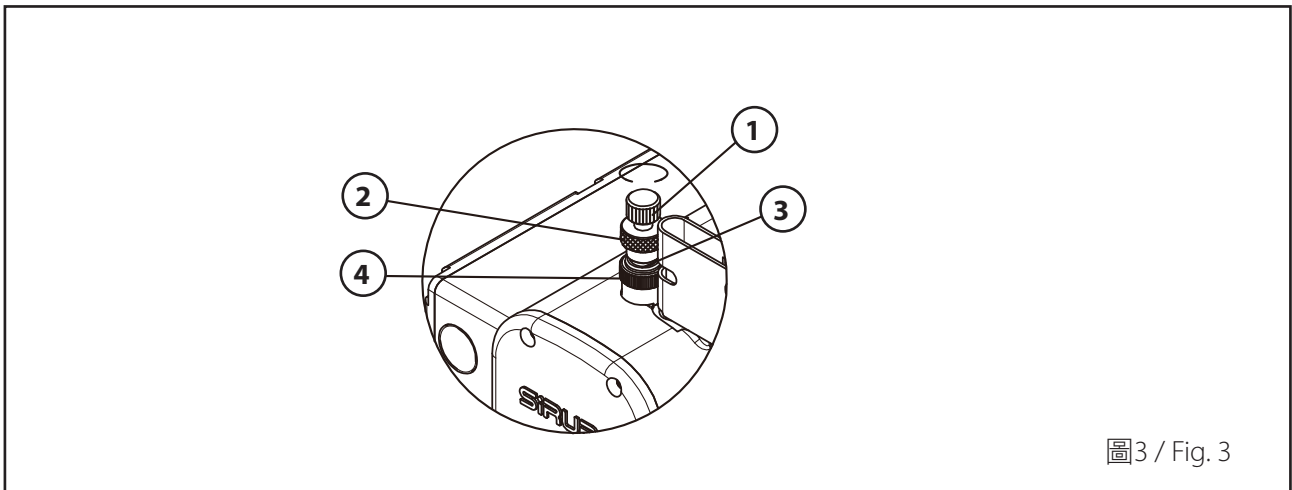
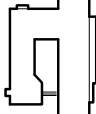

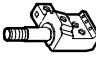
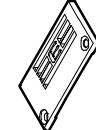
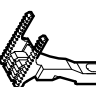



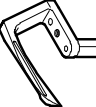

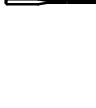


圖3 / Fig. 3

SIRUBA GAGE PARTS LIST		Series		Remark							Page	Date										
		F007KD		USE FOR FFT							1 / 1	2012/1/01										
																						
MODEL	SUB-CLASS	NEEDLE CLAMP	NEEDLE PLATE	MAIN DOG FEED DOG	DIFF. DOG FEED DOG	TOP DOG FEED DOG	PRESSER FOOT	LOOPER	SPREADER	NEEDLE												
機 型	規 格	針 座	針 板	主送具	差送具	上送具	壓 具	勾 針	上 叉	使 用 針												
W121/FFT/FHA	240 248 356 364	M5240 M5248 M5356 M5364	E1534 E1535 E1836 E1837	D1206P D1207P	H1258 H1259	F7240N F7356N	P7240N-A P7248N-A P7356N-A P7364N-A	ME28	MH41	UYX128GAS#10												
W121/FFT/FHA /UTG(UTJ)	240 248 356 364	M5240 M5248 M5356 M5364	E1534 E1535 E1836 E1837	D1206P D1207P	H1258 H1259	F7240N F7356N	P7240N-A P7248N-A P7356N-A P7364N-A	ME28	MH41	UYX128GAS#10												
W122/FFT/FHA	240 248 356 364	M5240 M5248 M5356 M5364	E1524 E1525 E1826 E1827	D1206P D1207P	H1258 H1259	F7240N F7356N	P7240N-A P7248N-A P7356N-A P7364N-A	ME28	MH41	UYX128GAS#10												
W122/FFT/FHA /UTG(UTJ)	240 248 356 364	M5240 M5248 M5356 M5364	E1524 E1525 E1826 E1827	D1206P D1207P	H1258 H1259	F7240N F7356N	P7240N-A P7248N-A P7356N-A P7364N-A	ME28	MH41	UYX128GAS#10												

SIRUBA

PARTS LIST

Series

F007KD

Parts Group

FFT

Subclass / Remark

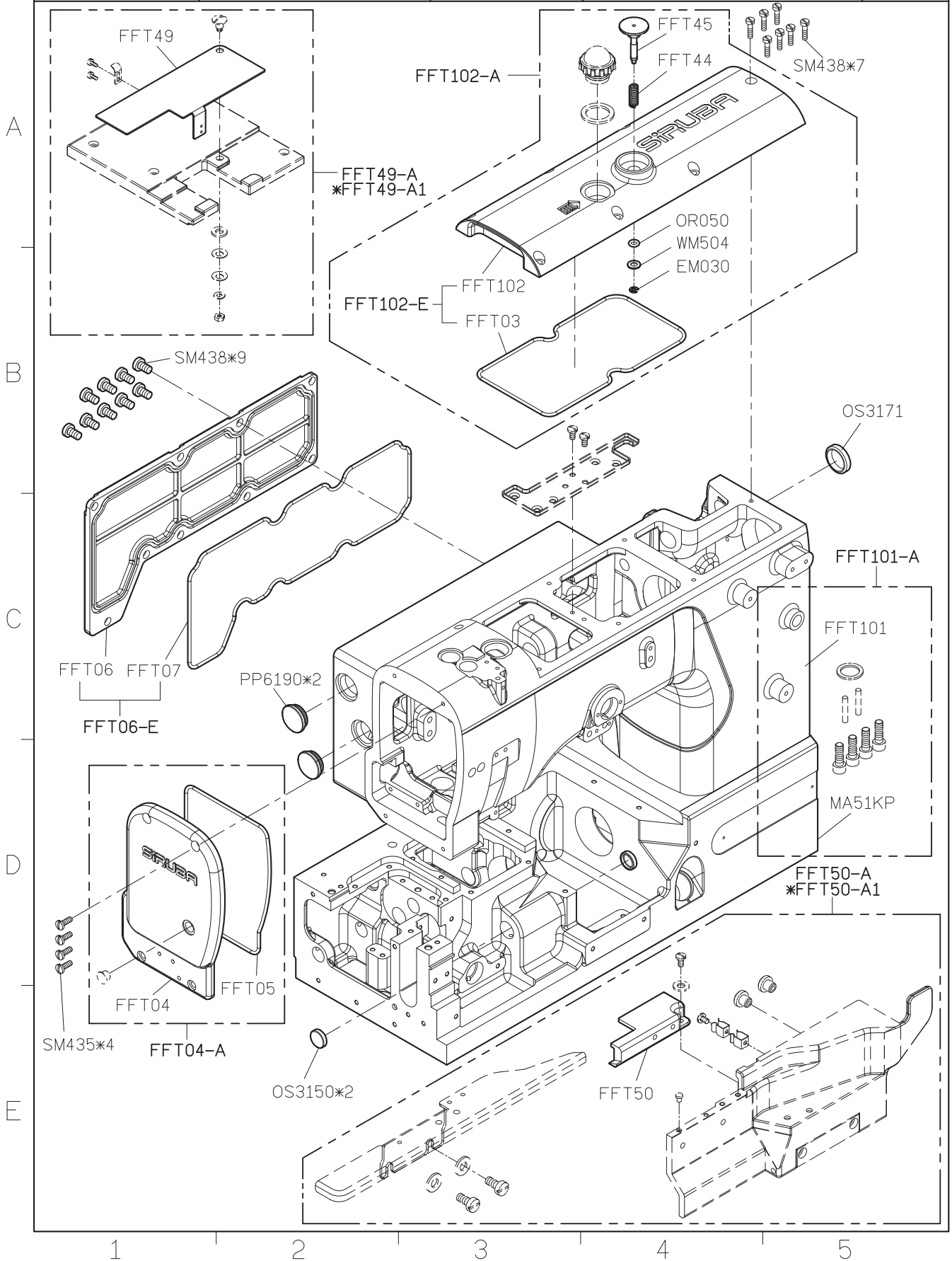
* Use for UT

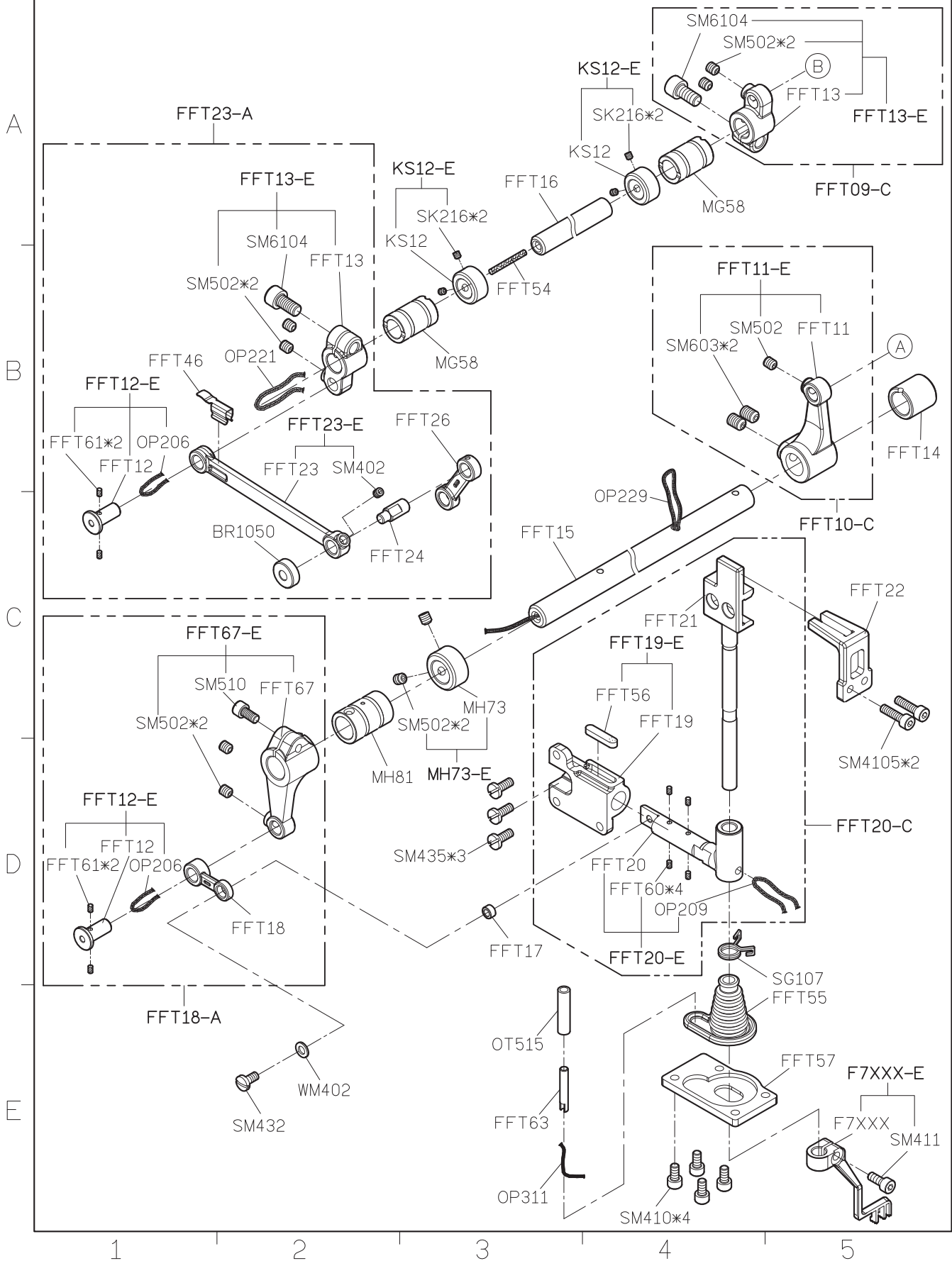
Page

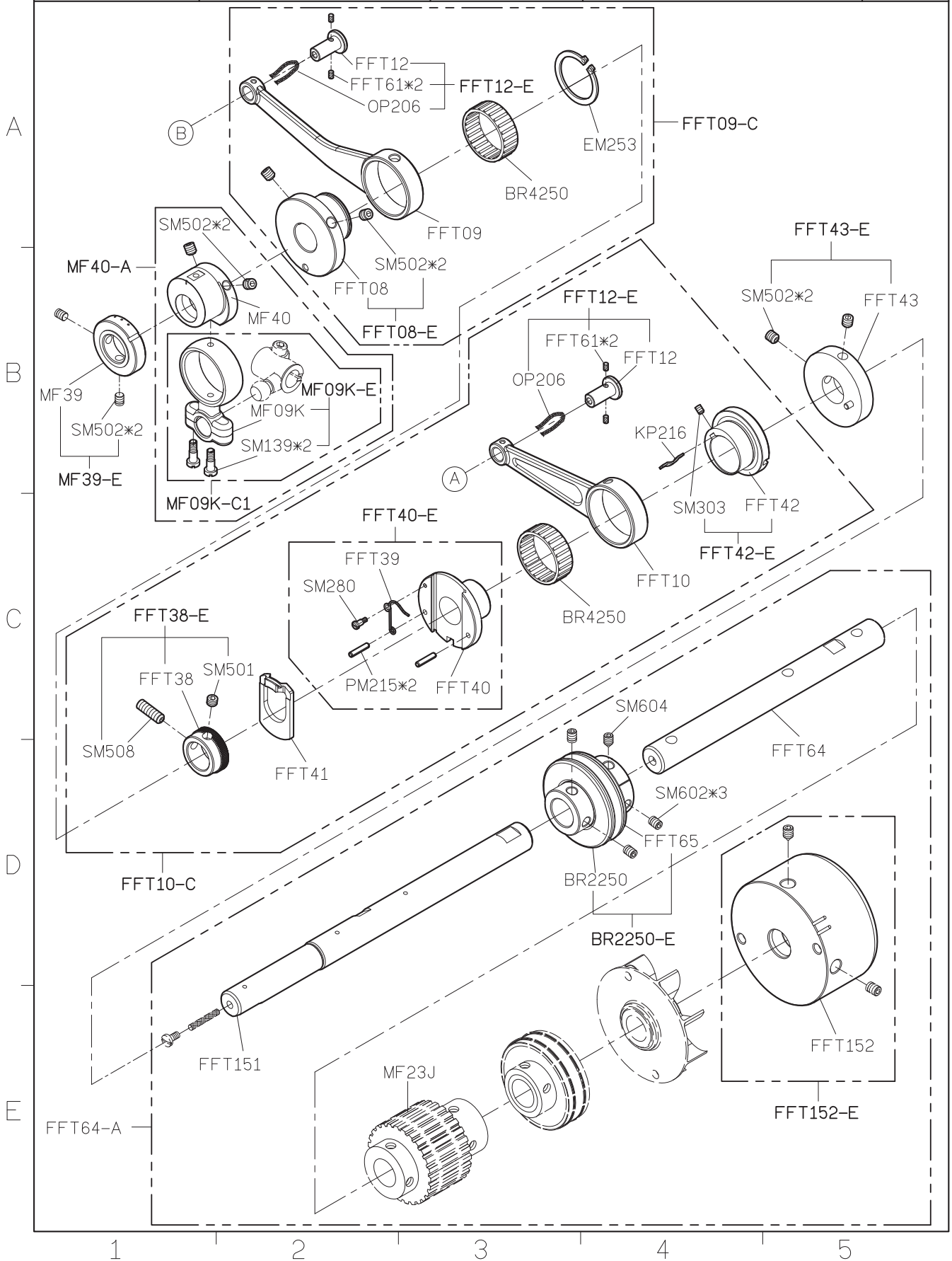
1/7

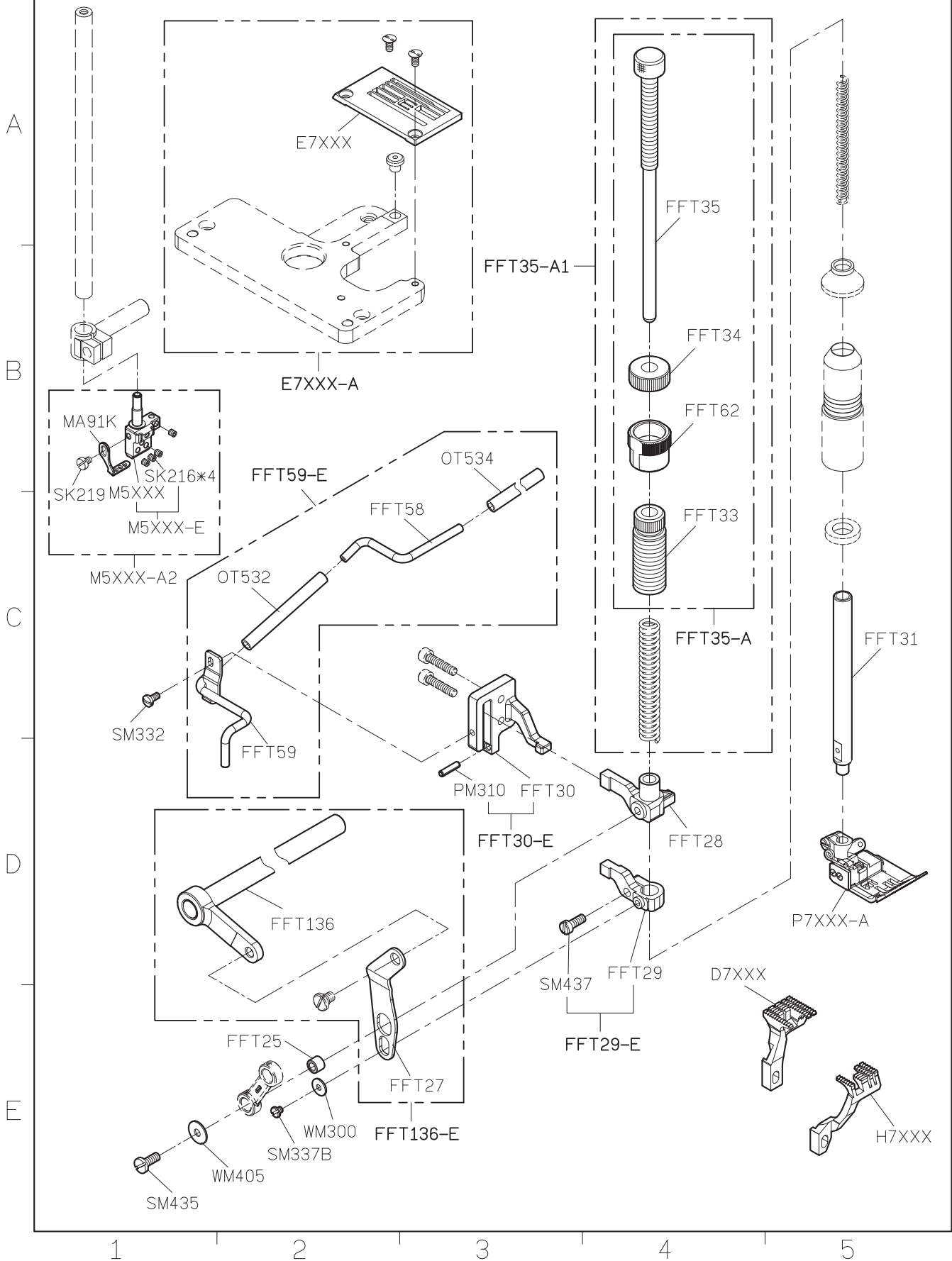
Date

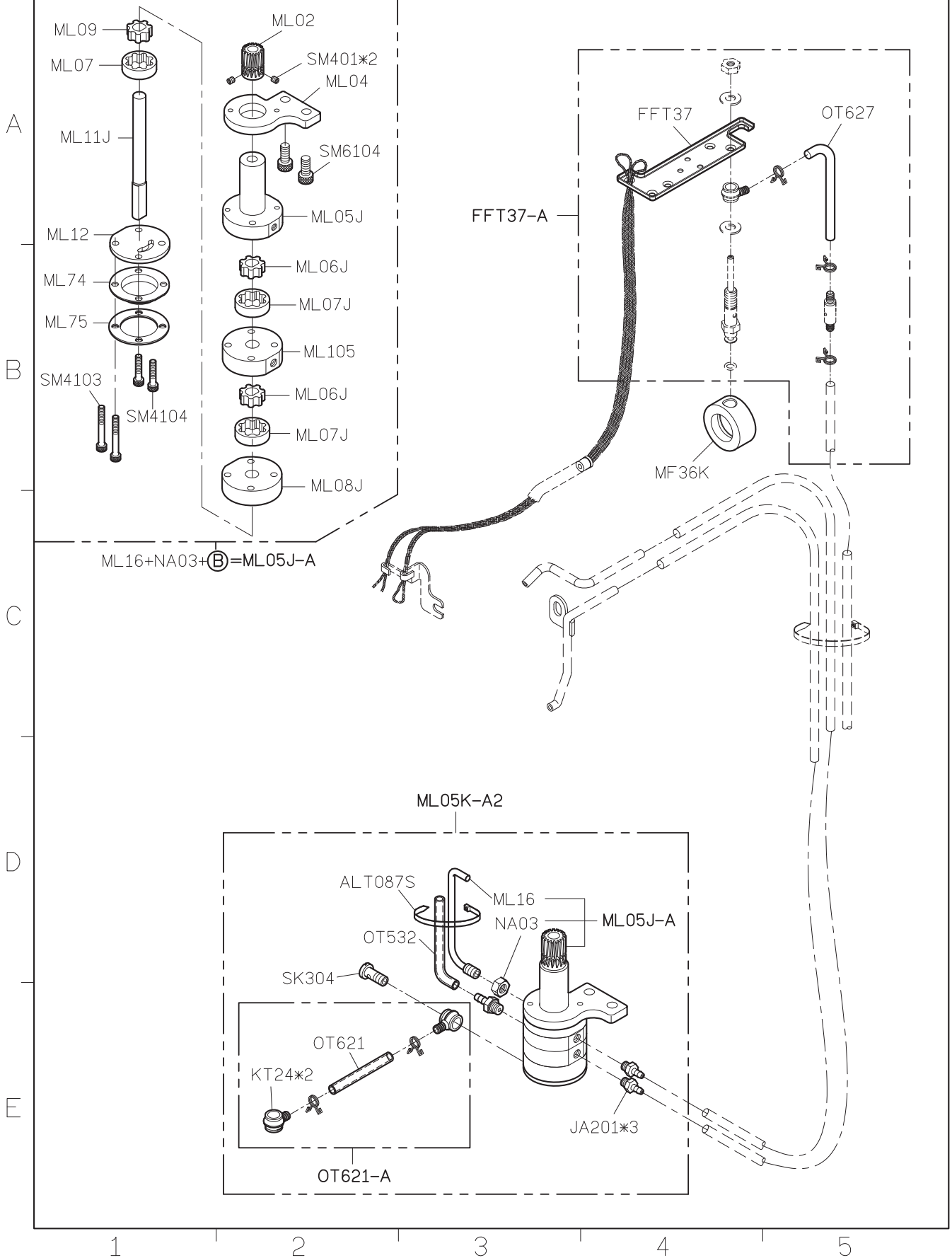
2013/09/02



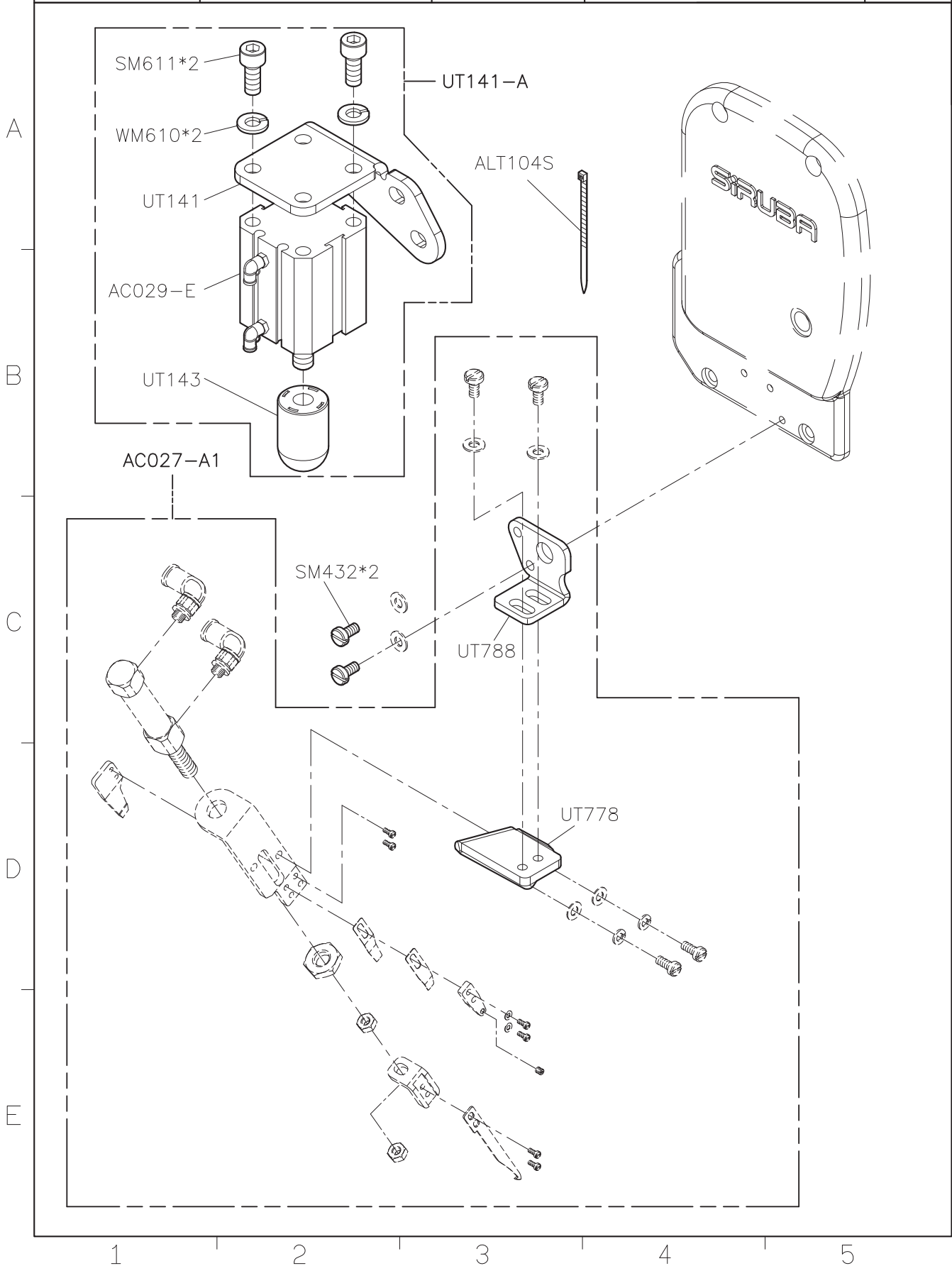




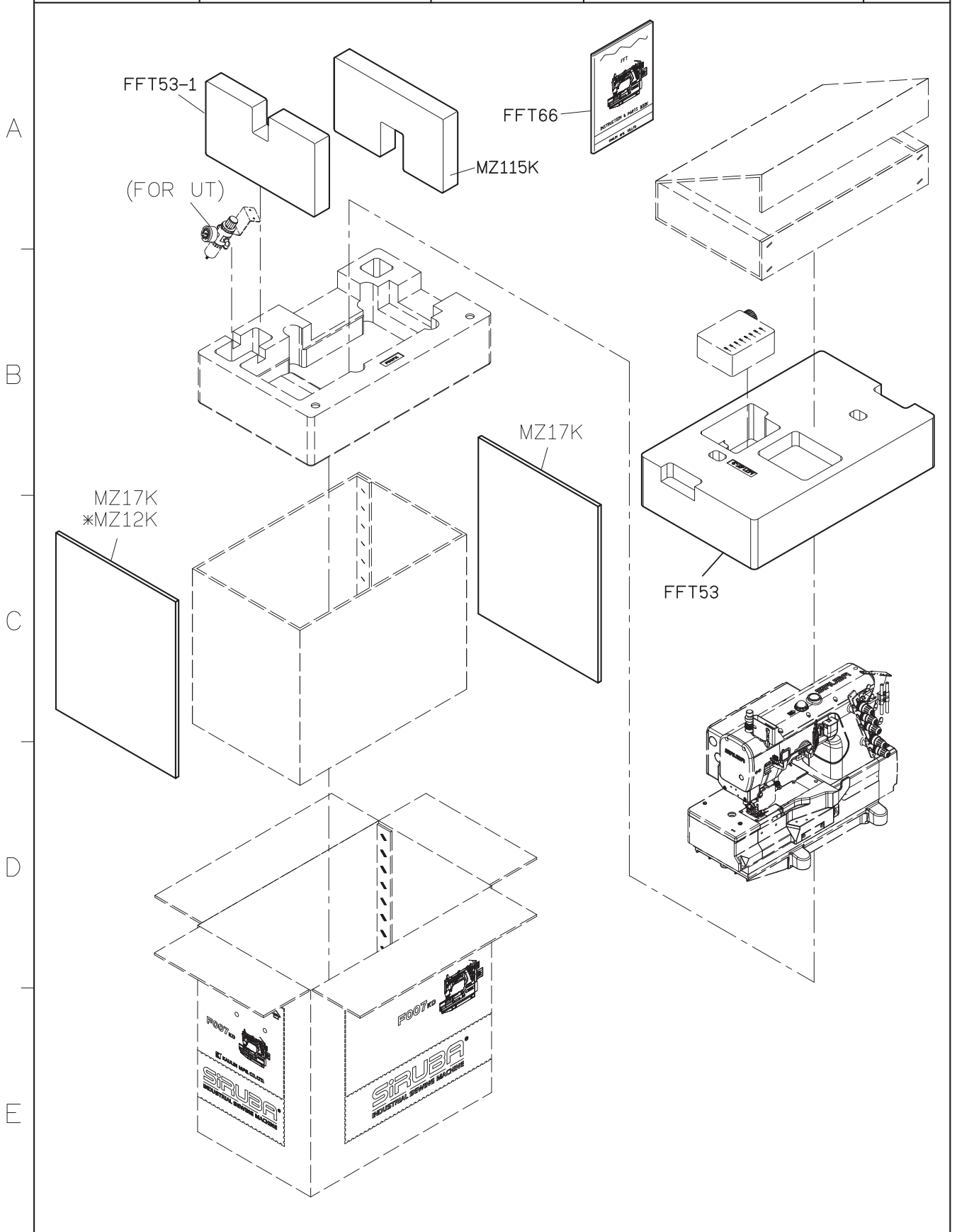


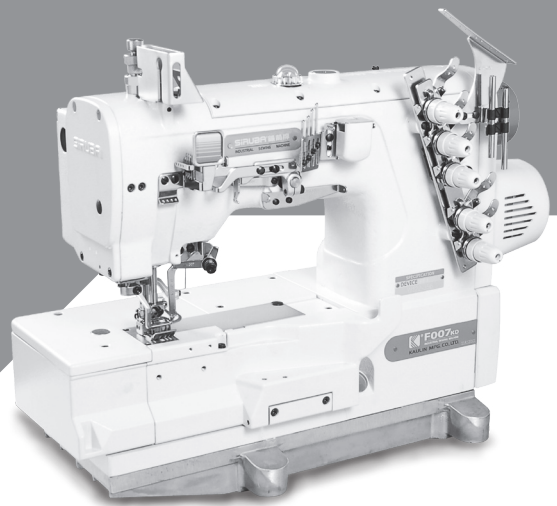


SIRUBA PARTS LIST	Series	Parts Group	Subclass / Remark	Page
	F007KD	FFT	Use for UT	6/7
				Date
				2013/09/04



SIRUBA PARTS LIST	Series	Parts Group	Subclass / Remark	Page
	F007KD	FFT	* Use for UT	7/7
				Date
				2012/08/20





 高林股份有限公司
KAULIN MFG. CO., LTD.

由於對產品的改良及更新，本產品使用說明書中與零件圖之產品及外觀的修改恕不事先通知！
The specification and/or the equipment described in the instruction book and parts list
are subject to change because of modification with out previous notice
FFT66.FEB.2014